



precitechnique

MANUFACTURE OF DEEP DRAWN HIGH PRECISION PARTS ON PROGRESSIVE TOOLS



Since 1961

Precitechnique has been specialized in the manufacture of deep-drawn high precision parts manufactured on progressive tools

- **Plant :**
4300m² + warehouse 700 m² located in Grenoble, in the heart of the Alps.
- **Workforce :** 70 employees
- **2025 revenue :** €16 million
- **Precitechnique :**
Designs and manufactures its own progressive dies. Annually produces more than 1 billion stamped parts, exported worldwide and intended for all industrial sectors.

HISTORIC

1961

Creation of PRECILIP
DAUPHINE, which
became
PRECITECHNIQUE
DAUPHINE in 1964

2005

PTD is purchased
by GENESIS
DEVELOPPEMENT

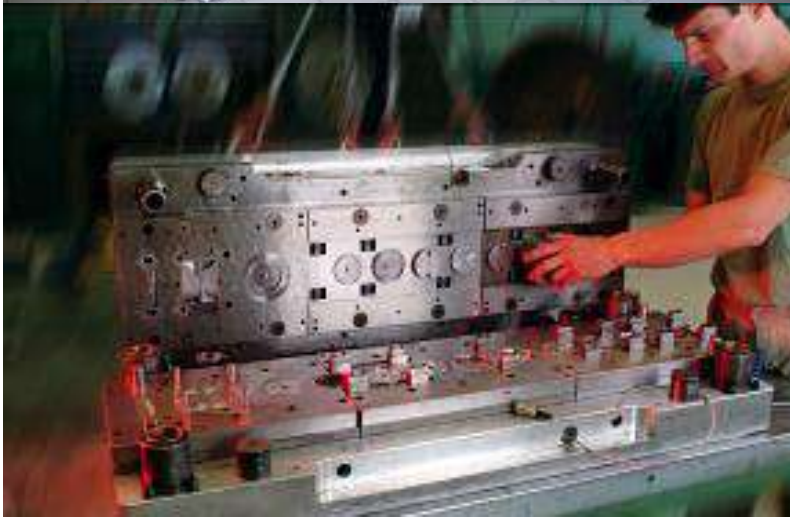
2013

Acquisition of DED
PRODUCTION

2023

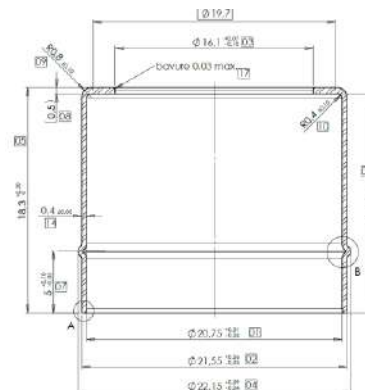
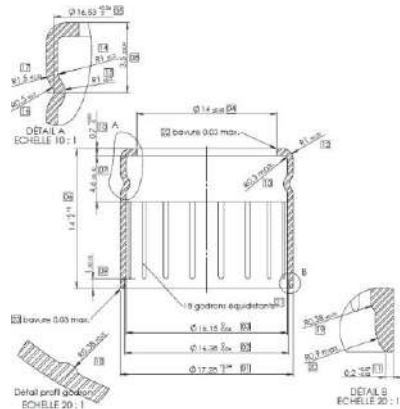
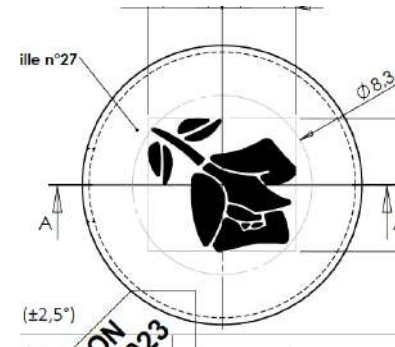
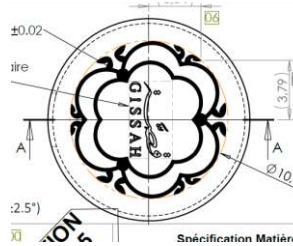
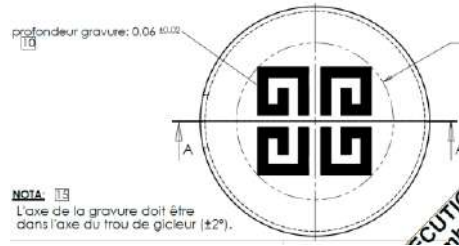
Change in
shareholder
structure

ENGINEERING AND DEVELOPMENT



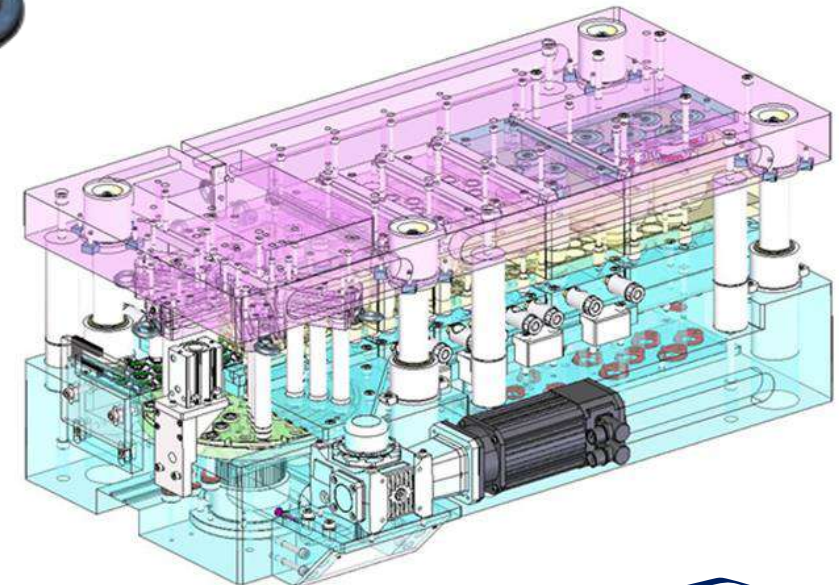
- Its mission is to provide customers with technical solutions and implementation. Solutions should integrate both technical, economical and quality expectations.
- In-house design and production of tooling in a workshop: 4 workstations equipped with 3D SolidWorks and LogoPress software.
- 1 license for SIMUFACT software.

Latest achievements in perfumery



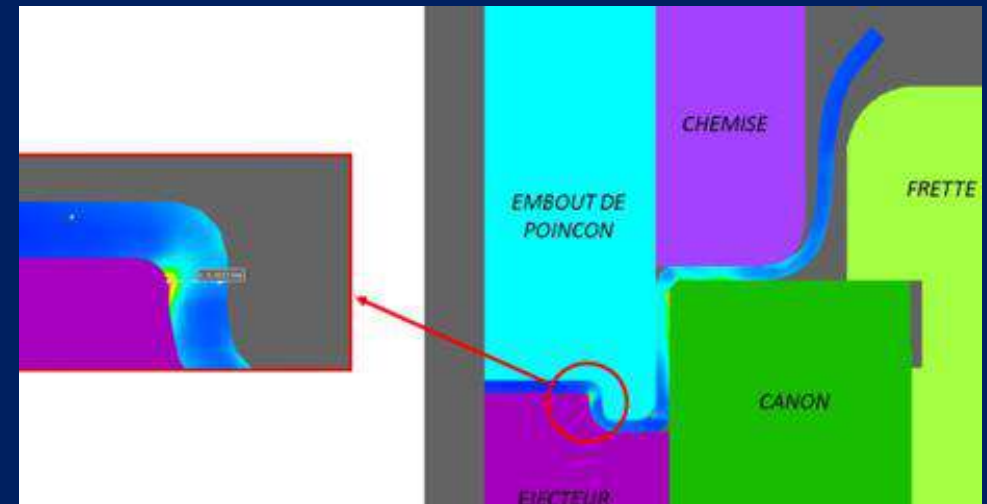
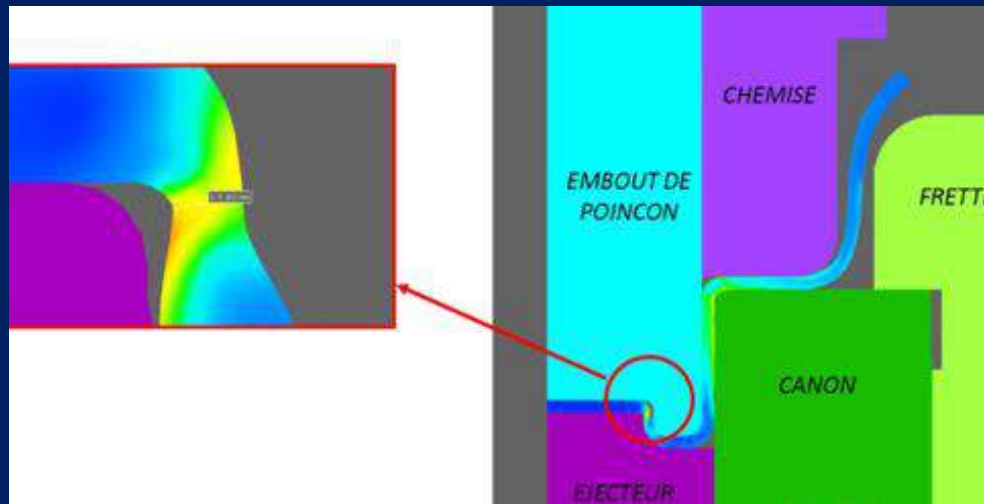
ENGINEERING AND DEVELOPMENT

- Potential development of curled-edge trims on OAS + rotary table transfer
- Molding machines



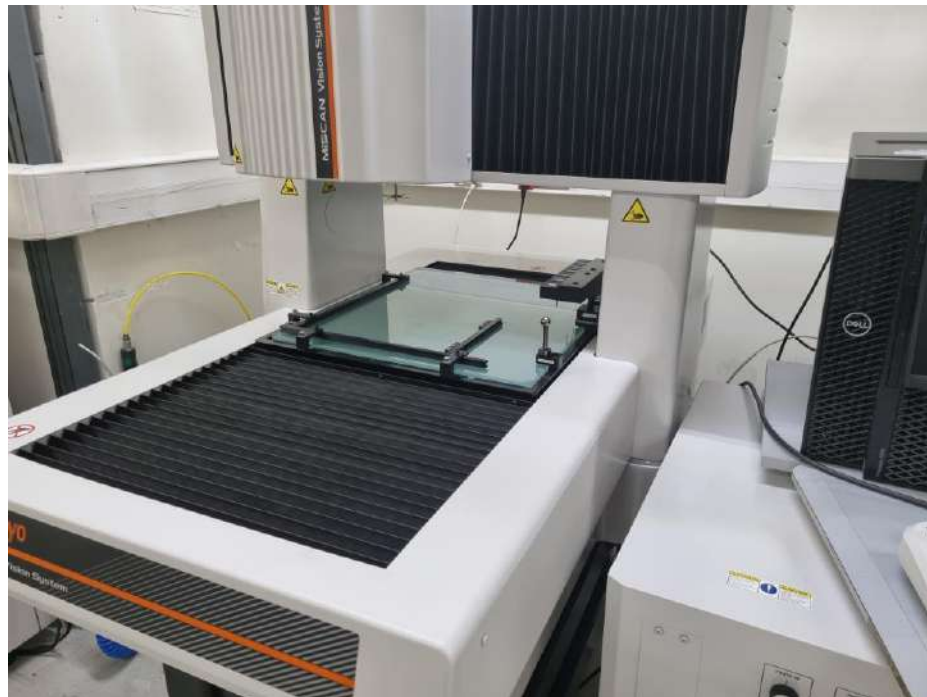
ENGINEERING AND DEVELOPMENT

- Simulation of tooling geometries reduces drastically the 'Time to market'
- Optimize process steps and tooling geometry.

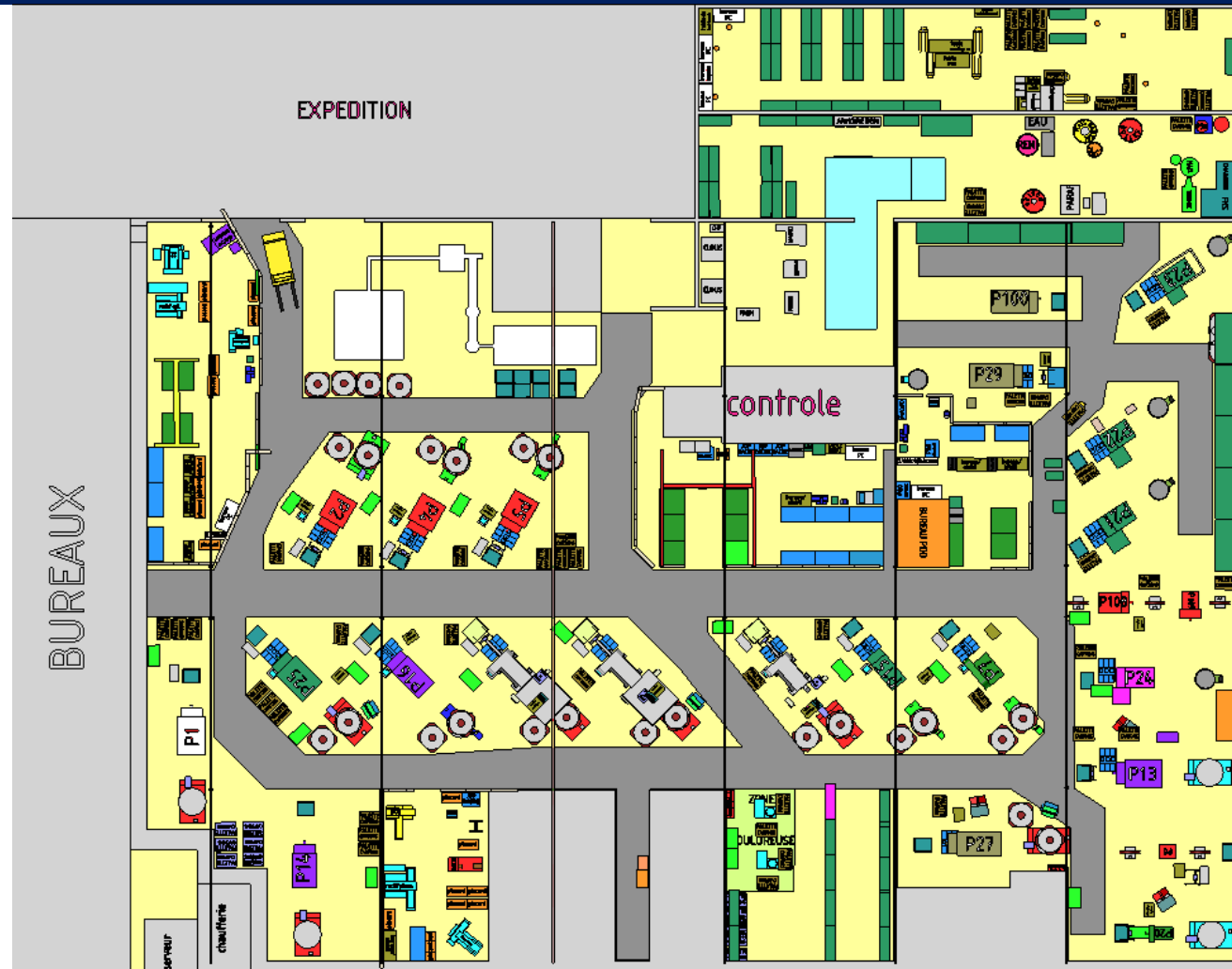


ENGINEERING AND DEVELOPMENT

Mitutoyo 3D measuring machine

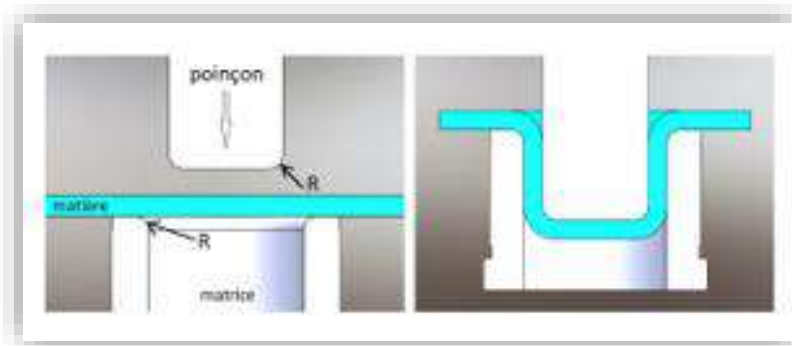
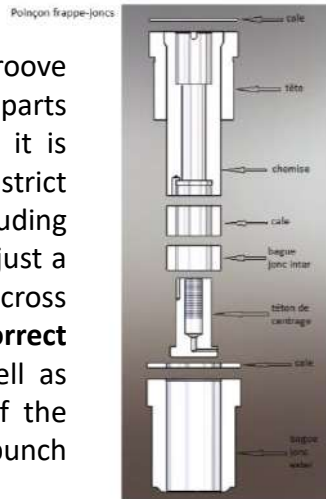


2026 LAYOUT



METHODS

Snap-ring punches (or ring-groove punches) consist of several parts stacked on top of one another; it is therefore essential to maintain strict **parallelism** between them, including the shims. A cumulative error of just a few hundredths of a millimeter across several parts can result in **incorrect and unstable dimensions**, as well as premature and irregular **wear** of the various components and the punch guide bushing.



Partnership with a technical school.



Alternated
training



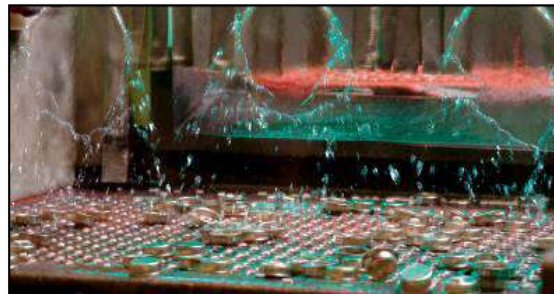
Precitechnique Academy



MEANS OF PRODUCTION

Manufacturing and inspection

- 23 progressive presses from 30T to 125T
- 1 compacting machine for aluminum scraps
- 2 molding machines
- 5 tribo finishing and washing machines
- 2 tri dimensional optical and probe measurement systems.
- 1 profilometer



NEW ACQUISITIONS

**New PRESSMAC press for caps
since July 2023.**



**New specialized press for
cups and flanges
commissioned in March 2024.**



**3 new YAMADA presses
arrived in October 2025.**

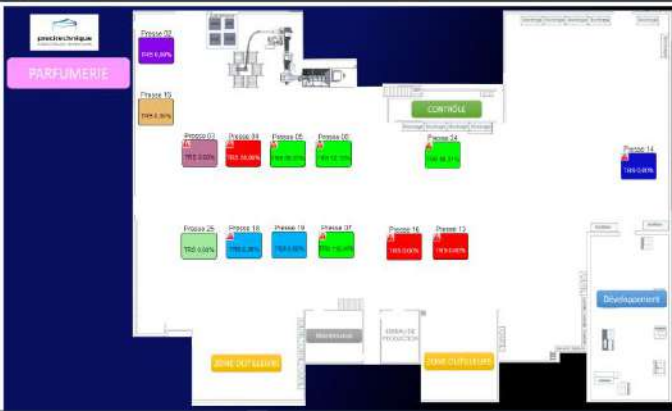
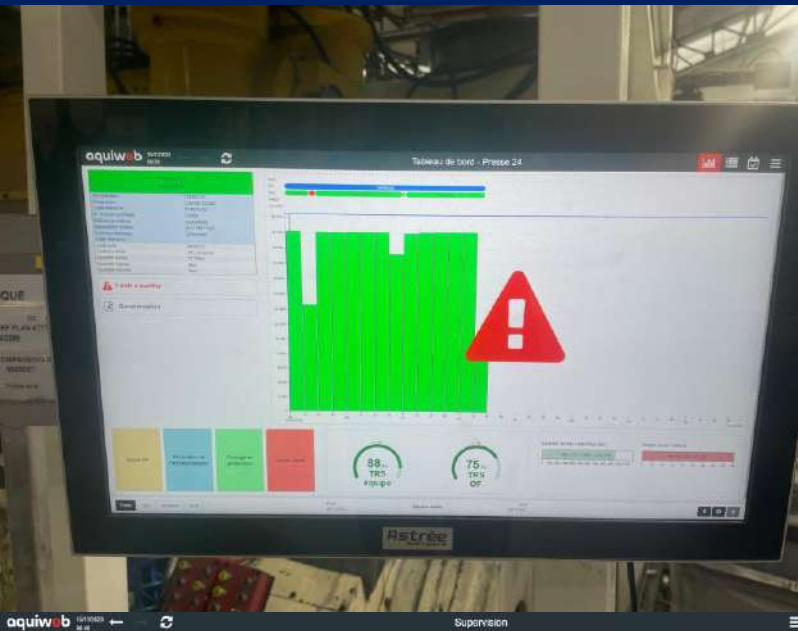


CONTINUOUS IMPROVEMENT : M.E.S.

- Start-up of MES (Manufacturing Execution System) since November 2023. *Software dedicated to production monitoring and operations support of a production workshop.*

Why?

- Need to master our processes.
- Facilitate the flow of information.
- Better visibility of production times across the press fleet.
- Digitalization will enable greater employee engagement and the processing of feedback to become proactive over time.
- Improved reliability and control of production times.
- Analysis of OEE (Overall Equipment Effectiveness) and downtime.



CERTIFICATION : ISO9001 : 2015

- **Certified ISO 9001:2015**



Precitechnique has partnered with EcoVadis, a leading certification body that evaluates CSR (Corporate Social Responsibility) performance.

This assessment is based on four main themes:

- Environment
- Labor and human rights
- Ethics
- Sustainable procurement.



Certificat
Certificate

N° 2025/113939.1

Page 1 / 1

AFNOR Certification certifie que le système de management mis en place par :
AFNOR Certification certifies that the management system implemented by:

PRECITECHNIQUE DAUPHINE SA

pour les activités suivantes :
for the following activities:

DEVELOPPEMENT D'OUTILS D'EMBOUTISSAGE ET PRODUCTION DE PRODUITS EMBOUTIS SUR
OUTIL A SUIVRE ET MOULURES, AINSI QUE LA VENTE DE PRODUITS ASSOCIES.

DEVELOPMENT OF STAMPING TOOLS AND PRODUCTION OF STAMPED PRODUCTS ON
PROGRESSIVE TOOLS
AND BEEDING, AS WELL AS THE SALE OF ASSOCIATED PRODUCTS.

a été évalué et jugé conforme aux exigences requises par :
has been assessed and found to meet the requirements of:

ISO 9001 : 2015

et est déployé sur les sites suivants :
and is developed on the following locations:

19 RUE BARNAVE ZI LES GLAIROUS FR-38400 ST MARTIN D HERES

Ce certificat est valable à compter du (première/second/third)
This certificate is valid from (première/second/third)

2025-06-13

Jusqu'à
until

2028-06-12

Julien NIZRI
Directeur Général d'AFNOR Certification
Managing Director of AFNOR Certification



Placez ce QR
Code pour vérifier la
validité du certificat

Noté en matière de responsabilité sociale sur [ecovadis.com](#), les fournisseurs des clients de l'entreprise. Les données sont mises à jour en temps réel sur [ecovadis.com](#).
Noted in terms of social responsibility on [ecovadis.com](#), the suppliers of the company's clients. The data is updated in real time on [ecovadis.com](#).

CUSTOMER REFERENCES

Aptargroup



vitesco
TECHNOLOGIES



MACH1 components in motion

Nemera



PERFUMERY / PHARMACEUTICAL MARKET

- **Actuator components:**

Actuator caps (600 million per year), capsules (300 million per year), and pump covers (materials: 5657 aluminum, 8011 aluminum, and 5005 aluminum with or without anodization, lacquered aluminum).

- **Packaging components:**

Using progressive tools which combine high productivity and reproducibility, Precitechnique has become the European leader of actuator caps.



CYCLING MARKETS

- Eyelets :**

We propose different sizes of eyelets for rims in stainless steel and burnished stainless steel.



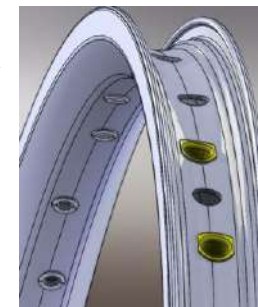
- Capsules :**

We offer a range of steel caps (zinc CR3) for double wall rims.

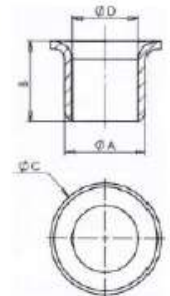
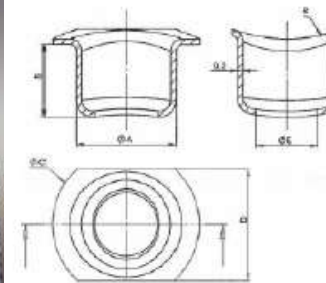


- Upper and lower tools to crimp eyelets on machines :**

We work in collaboration with our customers to determine the tools on their machines to crimp eyelets.



Manufacture of capsules and rim eyelets



Type	ØA	B	ØC	D	ØE	R
EMR 60	9	6,5	13,3	10	5,7	14,5
EMR 85	9,3	6,4	13,3	10,3	6,1	14,5
EMR 420	9	4,2	13,3	10	5,7	12,5
EMR 510	9,5	5,1	13,3	11,3	5,7	14
EMR 650	8,6	6,5	13,3	10,3	5,7	9
EMR 690	8,6	6,9	13,3	10,3	5,7	14,5
EMR 700	9	7	13,3	10	5,7	14,5
EMR 800	9	8	13,3	10	5,7	14,5
EMR 800-A	8,6	8	12,3	10,3	5,7	14
EMR 850	8,6	8,5	12,3	9,3	5,6	18
EMR 860	9	8,6	13,3	10	5,7	14,5
EMR 880	9	8,8	13,3	11,3	5,7	14,5
EMR 880-A	9	8,8	13,3	10,3	5,7	10,5
EMR 920	8,6	9,2	12,3	10,3	5,7	10,5
EMR 930	8,6	9,3	12,3	10,3	5,7	29,5
EMR 1020	9	10,2	13,3	10,3	5,7	9,5
EMR 1030	8,6	10,3	12,3	10,3	5,7	29,5
EMR 1060	8,6	10,6	12,3	9,3	5,7	6,5

Matière : Acier zinc blanc Cr3 8 à 16 microns

Type	ØA	B	ØC	ØD
EMR 57	5,4	5,7	7,3	4,4
EMR 78	5,4	5,2	7,3	4,4

Matière : Inox

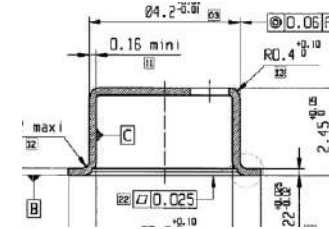


Type	Øext	Hauteur	Ø int
Cuvette	7,2	1,8	4,5

OTHER MARKETS



- **Electronic :**
 - Semiconductor
 - Opto electronic



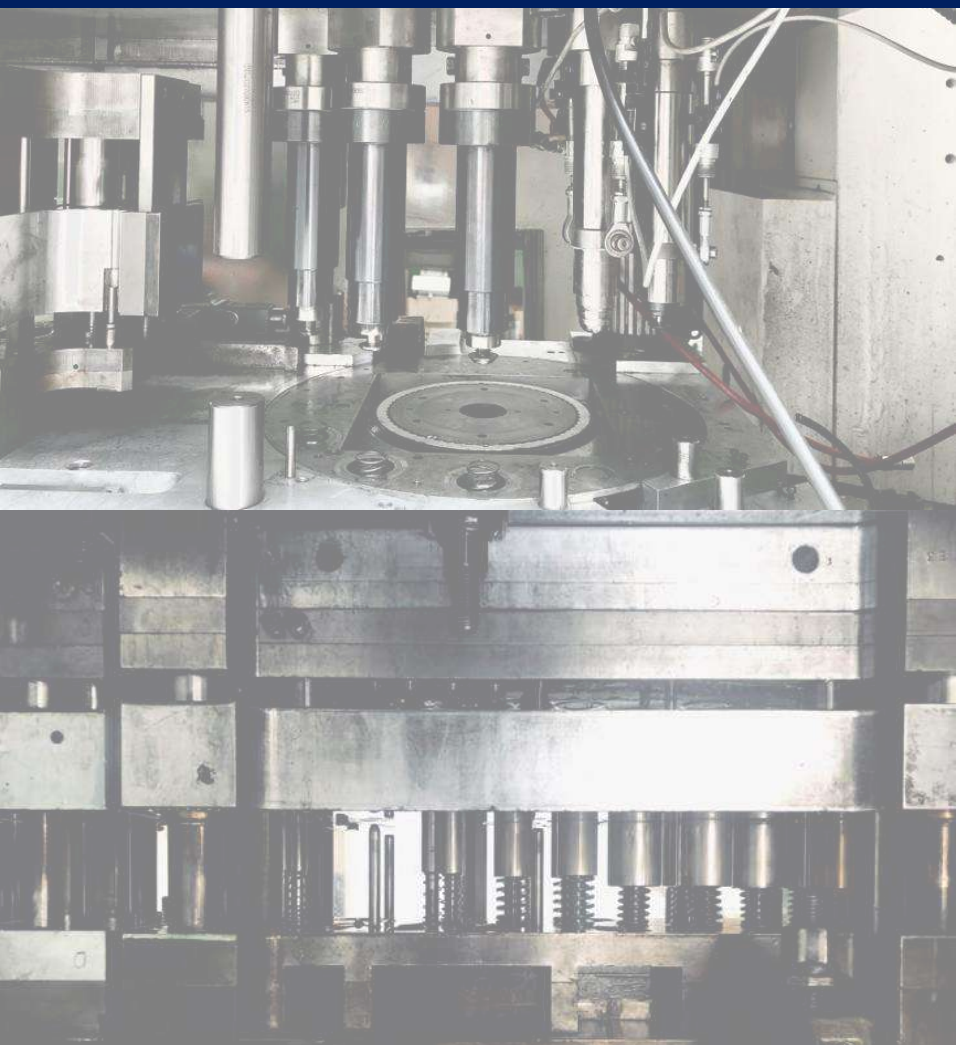
- **Automotive :**
 - Deep cap for electro pump (material stainless steel AISI 305)
 - Radiator valves (material stainless steel and EPDM seal)



- **Miscellaneous Markets :**
 - Caps for Liquid lenses for cameras (sensors, bar codes)
 - Metal items related to the garment manufacturing trades.



CONTACT



Headquarters and manufacturing site :
Zi les Glairons – 19 rue Barnave, 38400 Saint-Martin-d'Hères, France



+ 33 (0)4 76 51 08 96



Contact@precitechnique.com



www.precitechnique.com

Join us on our socials:

